



JIANGSU HUAJESTAINLESS STEEL PRODUCTS CO.,LTD

Add:Town of Dainan,Xinghua City,Jiangsu Province,China 225721

Telephone: 0086 523 8390 1012 Facsimile: 0086 523 8378 4202

Website: www.jshjbxg.com Email: sales1@jshjbxg.com

K-Wing specializes in Stainless steel grade 304 and 316 hardware manufacturing. Production include precision casting, hot forging and machining. Product include special OEM manufacturing for Architecture, such as handrail fitting, turnbuckles, glass fitting and wire terminals. Marine hardware productions such as stainless snap shackles, wire terminals, anchors, cleat and special designed marine fitting.

Our stainless steel production focuses on four principal processes. Although a variety of additional finishing processes may be used on the end product, the main forming methods of stainless steel remain: Casting, Forging, Press forming, and Machining.

Principal Stainless Steel Forming Methods:

1) Casting

Casting (or lost wax casting) as its name implies, utilizes the free shape forming of wax followed by 5 layers of ceramic shell made of silicon mallet sand. Each layer of ceramic shell applied is of a different grade; they must cover thoroughly and be dry before the next layer is added on the top of the previous layer. When all five layers of ceramic are formed securely, the wax inside the using steam, heat and pressure. Molten stainless steel is then poured into the ceramic moldings for the product to take shape.



ceramic is removed

2) Forging

Forging utilizes mainly round bar sections, heated to 1020C forging temperature. At this temperature, the stainless is soft enough for press forming, but does not melt. Using high compression and dies, the required form of the product can be produced. The Advantages of Forging components is its strength. The molecules are highly compacted to form very high-strength components. The disadvantages of Forging components are the limited forms and shapes as well as high molding costs.



3.) Press Forming

Press forming refers to using processed sheets to compression "cut" by means of a Press. This form of manufacturing can be very economical as form sheets can be bent into any desired shape. However the disadvantages are the limited thickness as well as high molding cost. A variety of after-forming processes, including welding and assembly, can be added to Press forming products to achieve the desired end product.



4) Machining

Machining consist of taking a solid block of Stainless steel, or a round bar section, and by means of cutting/ carving, called Turning and Milling, the desired object is achieved. Just about any shape or form can be achieved by the combination of these two processes. Never-the-less these are not ideal manufacturing procedures and depending on the form required, it may take several hours just to achieve one single item. However, in some cases and depending on the shape of the required product, machining may be the most economical and fastest production method. Also, due to the fact that machining is always done from a wrought-worked block of stainless steel or a solid round bar, the strength on the final product may be as high as that of forged products.



To overcome the constraints of one single forming method, a production design with a combination of production methods is the best solution. Please notify us in advance whenever possible when you need assistance in designing your desired product. This will reduce tool costs as well as time in production.

Finish Details:

1) Threading

Threading can be classified in general as internal threading or external threading.

In internal threading, threads are on the inside of a circular tube and this process is referred to as Tapping. Tapping is usually preceded by drilling to achieve the specified dimensions before the internal threads are tapped.



External threads may be produced by Rolling or Cutting. In rolling, the bar is pre-finished to specified dimensions, and using compression of two roller dies the thread is pressed into form. These threads are easy to press and are on average 25% stronger than a Cut thread. However, Roller threads require more expensive equipment and more product. Cut threads are on the other hand produced by a simple turning machine. The cost of production per unit may be high, but it is the most economical method when quantities of required pieces are small or very odd-thread specifications are required.



2) Welding

Welding stainless steel is more critical than normal steel welding. In order to protect contaminating the exposed surface of heated stainless steel, a protective layer of Argon is applied. Further Fillers may be added to extend the strength of the desired products. The two most common welding processes are TIG and MIG welding. MIG uses a higher temperature and thus results in a stronger and more expensive weld.



3) Surface Finish

Surface finish is one of the most critical areas of product design; it will determine how end users perceive the value of the product as well as product resistance to the environment and tea stain. Deciding on a product's finished surface is best achieved by considering the environment where the item will be used. As a general rule of thumb, the finer the surface, the more the cost of manufacturing as well as better Corrosion resistance.

- a.) **Mirror polished finish** is the most expensive of all finishes. It involves several layers of fine grinding and waxing to arrive at a mirror exterior. Due to the fine finish it is least



susceptible to tea stain forming. For this reason marine fittings, which are exposed to sea water, are finished this way.

Machine finish is turned (cut) on a Lathe. This results in a very uniform, lined finish and thus has a very mechanical look to it. Matt finish is polished by a satin grade of 800 rollers; it provides a non-reflective surface similar to Machined finish.

Sand blasting finish uses a combination of blast elements; most popular are glass beads to uniformly destroy the surface; light is then reflected from within the spherically dented surface created by the blasting. This surface is very popular for interior designers for its aesthetic affect as well as its finger-print-resistant feature.

d.) Electro polished finish uses electricity in a tank of chemicals. Similar to a wet battery setup, the outer layer of molecules of the stainless steel product is peeled away exposing the Chromium molecules resulting in a shining and corrosion-resistance finish.

4) Passivation

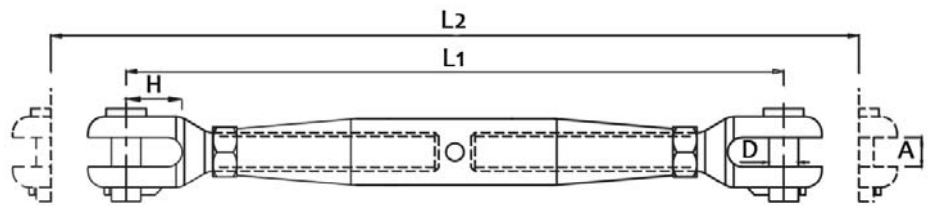
Passivation is the process of making a material "passive" in relation to other contaminants. In stainless steel this is achieved by rinsing the items with a dilute solution of nitric acid and peroxide alternating with deionized water. The nitric acid and peroxide oxidizes and dissolves any impurities on the exposed surface of the stainless fitting, and the deionized water rinses away the acid and oxidized impurities. This process adds an extra layer of protection to Stainless steels surfaces.

Once a stainless steel product goes through the above main forming methods, a variety of finishing details will follow. In this section we will cover the most common methods of stainless steel finishing processes.

Requesting a quotation is simple: send us a physical sample or electronic drawing in .dwg / pdf file of the product you are after together with the following information:

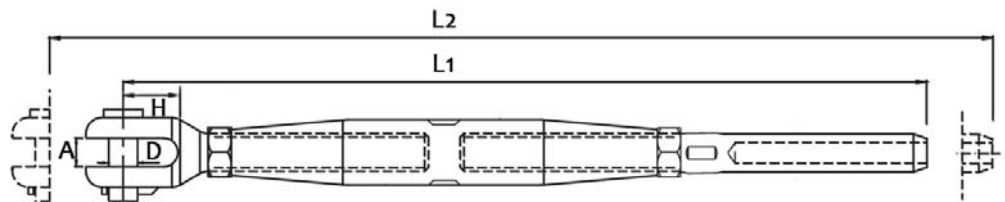
- a.) Quantity**
- b.) Name of material**
- c.) Method of manufacturing**
- d.) Grade or UNS number**
- e.) Tolerances**
- f.) Heat treatment**
- g.) End finish required**
- h.) Surface conditions**
- i.) Test report required**
- j.) Packaging methods**
- k.) Shipment methods**

Should you not have the above information, we will work with you to determine a best value format to suit your needs. The more detailed information we receive in regard to the use of the item will allow us to better suggest production methods to maximize value and reduce production time.



**Rigging Screw Machined Fork&Fork
High Polished Stainless Steel - AISI 316**

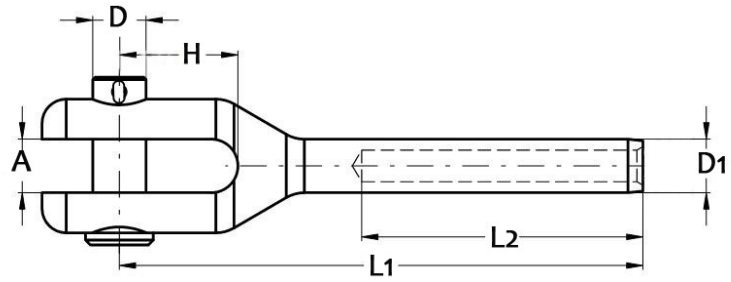
Art. No.	Size	L1 (mm)	L2 (mm)	A (mm)	D (mm)	H (mm)	WLL (kg)
MR0102-0005	M5	130	190	6.5	5	10	100
MR0102-0006	M6	155	225	7.5	6	10	150
MR0102-0008	M8	180	255	11	8	11	250
MR0102-0010	M10	210	300	12	9	14	350
MR0102-0012	M12	270	380	14	12	20	600
MR0102-0014	M14	295	415	15	12	22	700
MR0102-0016	M16	340	480	17	16	26	1000



**Rigging Screw Machined Fork&Terminal
High Polished Stainless Steel - AISI 316**

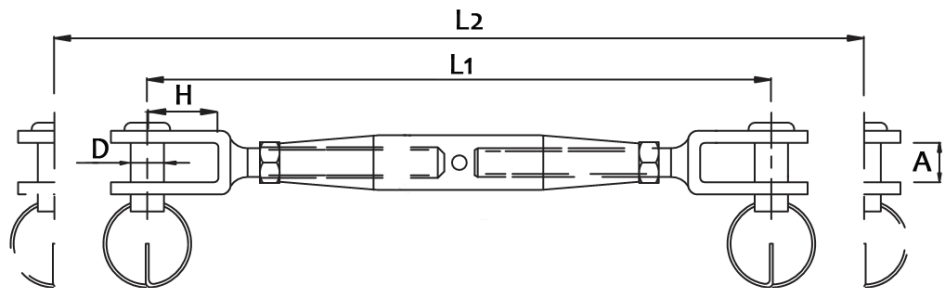
Art. No.	Size	Wire (mm)	L1 (mm)	L2 (mm)	A (mm)	D (mm)	H (mm)
MR0103-0603	M6	3.0	180	250	7.5	6	10
MR0103-0804	M8	4.0	210	285	11	8	11
MR0103-1005	M10	5.0	240	330	12	9	14
MR0103-1206	M12	6.0	300	410	14	12	20
MR0103-1407	M14	7.0	330	450	15	12	22
MR0103-1608	M16	8.0	370	410	17	16	26





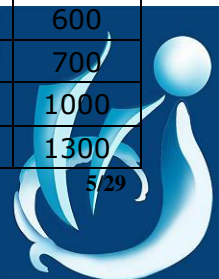
**Fork Terminal Machined
High Polished Stainless Steel - AISI 316**

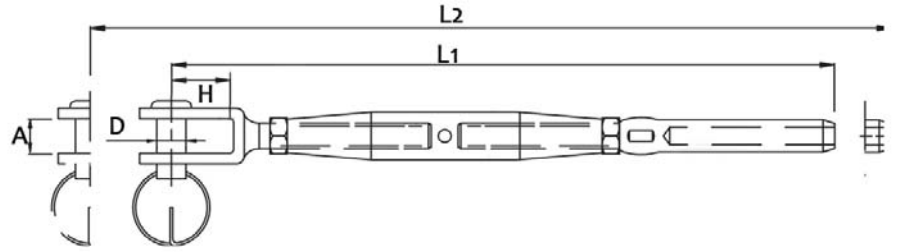
Art. No.	Wire (mm)	L1 (mm)	L2 (mm)	A (mm)	D (mm)	D1 (mm)	H (mm)
MR0104-0003	3	73	39	7.5	6	6.5	10
MR0104-0004	4	86	45	11	8	7.5	11
MR0104-0005	5	100	52	12	9	9	14
MR0104-0006	6	128	64	14	12	12.5	20
MR0104-0007	7	135	70	15	12	14.2	22
MR0104-0008	8	155	80	17	16	16	26
MR0104-0012	12	197	105	20	19	20	45
MR0104-0014	14	239	140	22	22	25	49
MR0104-0016	16	271	160	25	25.4	28	52



**Rigging Screw Fork&Fork
High Polished Stainless Steel - AISI 316**

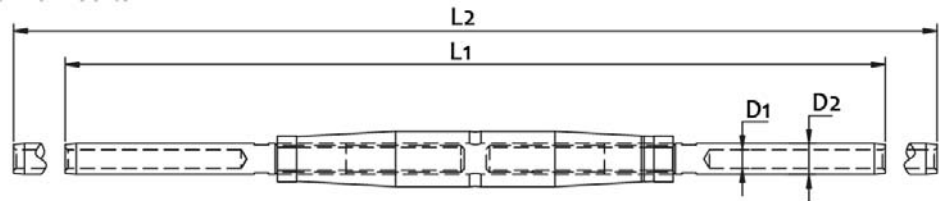
Art. No.	Size	L1 (mm)	L2 (mm)	A (mm)	D (mm)	H (mm)	WLL (kg)
MR0105-0005	M5	130	190	6.5	5	10	100
MR0105-0006	M6	150	220	7.5	6	10	150
MR0105-0008	M8	165	240	11	8	11	250
MR0105-0010	M10	190	280	12	9	14	350
MR0105-0012	M12	245	360	14	12	20	600
MR0105-0014	M14	270	390	15	12	22	700
MR0105-0016	M16	310	450	17	16	26	1000
MR0105-0020	M20	360	510	20	19	30	1300





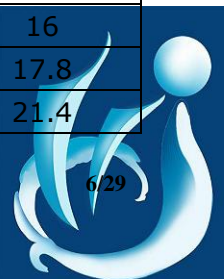
**Rigging Screw Fork&Terminal
High Polished Stainless Steel - AISI 316**

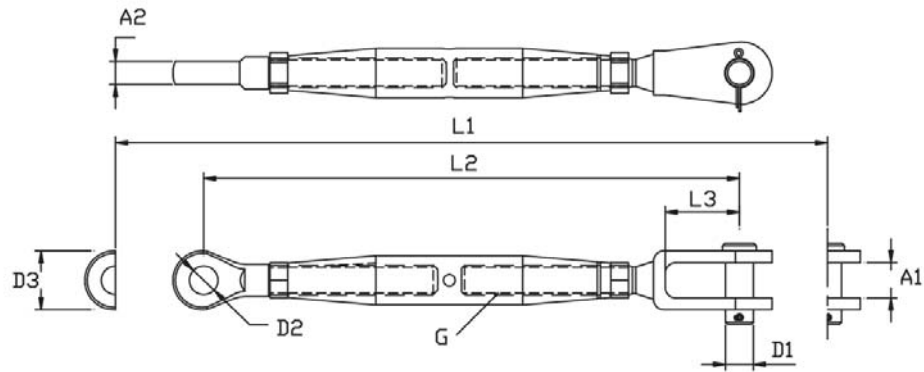
Art. No.	Size	Wire (mm)	L1 (mm)	L2 (mm)	A (mm)	D (mm)	H (mm)
MR0106-0525	M5	2.5	155	215	6.5	5	10
MR0106-0603	M6	3	175	245	7.5	6	10
MR0106-0804	M8	4	200	275	11	8	11
MR0106-1005	M10	5	230	320	12	9	14
MR0106-1206	M12	6	285	400	14	12	20
MR0106-1407	M14	7	315	435	15	12	22
MR0106-1608	M16	8	360	500	17	16	26
MR0106-2010	M20	10	410	560	20	19	30
MR0106-2012	M20	12	430	580	23	19	35



**Rigging Screw Terminal&Terminal
High Polished Stainless Steel - AISI 316**

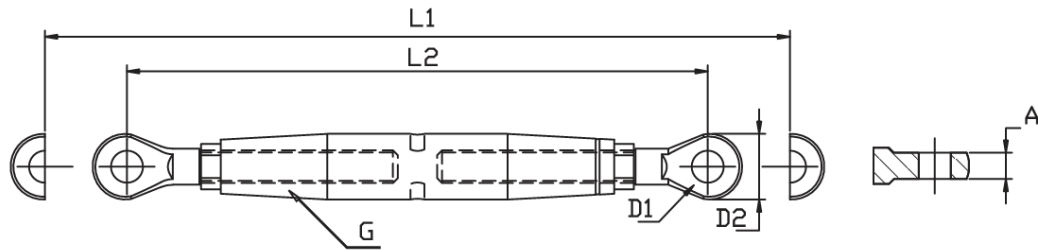
Art. No.	Size	Wire (mm)	L1 (mm)	L2 (mm)	D1 (mm)	D2 (mm)
MR0107-0502	M5	2.0	178	239	2.2	5.5
MR0107-0525	M5	2.5	178	239	2.8	5.5
MR0107-0603	M6	3.0	204	274	3.5	6.4
MR0107-0604	M6	4.0	214	284	4.4	7.5
MR0107-0804	M8	4.0	242	312	4.4	7.5
MR0107-1005	M10	5.0	267	350	5.3	9
MR0107-1206	M12	6.0	327	410	6.5	12.6
MR0107-1207	M12	7.0	346	454	7.5	14.2
MR0107-1208	M12	8.0	382	490	8.4	16
MR0107-1608	M16	8.0	418	548	8.4	16
MR0107-2010	M20	10.0	466	620	10.5	17.8
MR0107-2012	M20	12.0	504	658	12.5	21.4





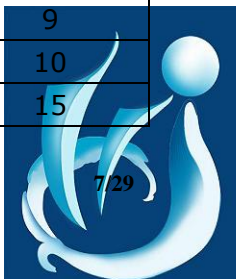
**Rigging Screw Eye&Fork
High Polished Stainless Steel - AISI 316**

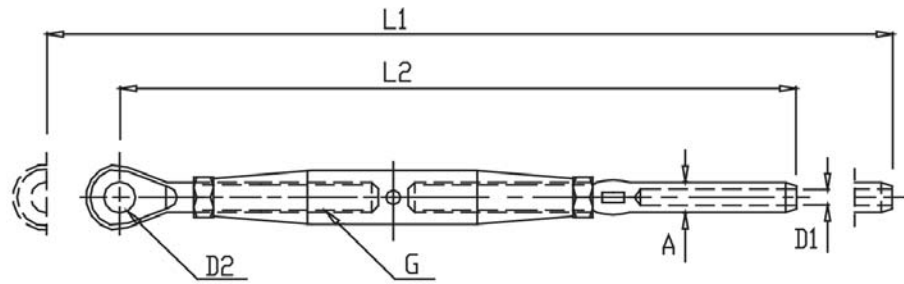
Art. No.	G	L1 (mm)	L2 (mm)	L3 (mm)	D1 (mm)	D2 (mm)	D3 (mm)	A1 (mm)	A2 (mm)
MR0158-0005	M5	188	129	12	5	5.5	12.0	7.5	3.0
MR0158-0006	M6	206	138	12	5	6.5	14.0	7.5	4.0
MR0158-0008	M8	244	164	13	6	8.5	17.0	9.5	5.0
MR0158-0010	M10	271	188	15	8	10.5	21.0	11.0	6.0
MR0158-0012	M12	343	235	25	12	13.0	25.0	14.5	8.0
MR0158-0014	M14	381	262	25	12	13.0	28.0	14.5	9.0
MR0158-0016	M16	426	296	33	14	14.5	31.0	18.0	10.0
MR0158-0020	M20	518	364	50	19	19.5	40.0	24.0	15.0



**Rigging Screw Eye&Eye
High Polished Stainless Steel - AISI 316**

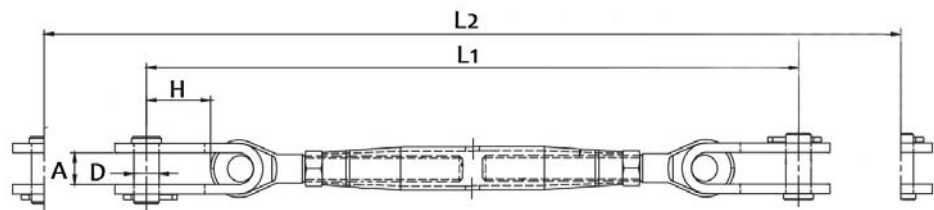
Art. No.	G	L1 (mm)	L2 (mm)	D1 (mm)	D2 (mm)	A (mm)
MR0159-0005	M5	190	131	5.5	12	3
MR0159-0006	M6	204	136	6.5	14	4
MR0159-0008	M8	244	164	8.5	17	5
MR0159-0010	M10	270	187	10.5	22	6
MR0159-0012	M12	334	226	13.0	25	8
MR0159-0014	M14	376	257	13.0	28	9
MR0159-0016	M16	408	278	14.5	31	10
MR0159-0020	M20	488	334	19.5	40	15





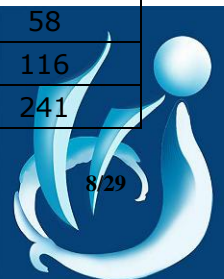
**Rigging Screw Eye&Terminal
High Polished Stainless Steel - AISI 316**

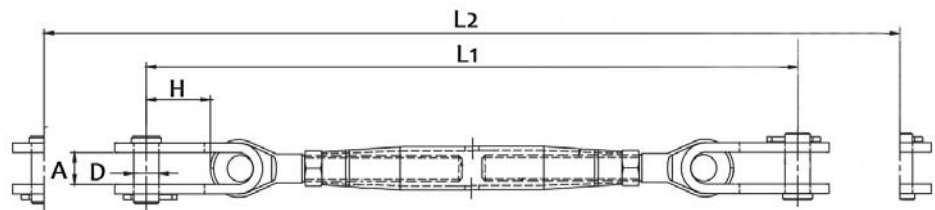
Art. No.	Wire (mm)	G	L1 (mm)	L2 (mm)	D1 (mm)	D2 (mm)	A (mm)
MR0160-0502	2	M5	213	151	2.2	5.5	5.5
MR0160-0525	2.5	M5	213	151	2.8	5.5	5.5
MR0160-0603	3	M6	234	166	3.5	6.5	6.4
MR0160-0804	4	M8	282	202	4.4	8.5	7.5
MR0160-1005	5	M10	311	227	5.3	10.5	9.0
MR0160-1206	6	M12	379	271	6.5	13.0	12.6
MR0160-1207	7	M12	387	279	7.5	13.0	14.2
MR0160-1407	7	M14	432	314	7.5	13.0	14.2
MR0160-1608	8	M16	478	350	8.4	14.5	16.0
MR0160-2010	10	M20	593	405	10.5	19.3	17.8
MR0160-2012	12	M20	573	419	12.5	19.5	20.0



**Rigging Screw Toggle&Toggle - Eye Toggle Style
High Polished Stainless Steel - AISI 316**

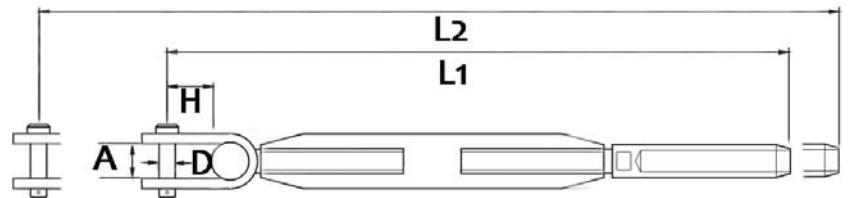
Art. No.	Size	A (mm)	D (mm)	H (mm)	L1 (mm)	L2 (mm)	WLL (kg)	Weight (kg/100pcs)
MR0108-0006	M6	7	6	15	160	230	200	10.8
MR0108-0008	M8	10	8	20	190	265	350	19.5
MR0108-0010	M10	12	9	25	230	320	700	32.5
MR0108-0012	M12	13	12	30	280	390	900	58
MR0108-0016	M16	17	16	40	370	510	1200	116
MR0108-0020	M20	20	19	45	430	570	2000	241





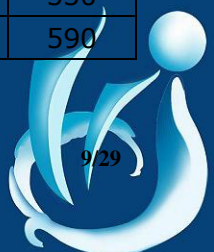
Rigging Screw Toggle&Toggle - Eye Toggle Style
High Polished Stainless Steel - AISI 316

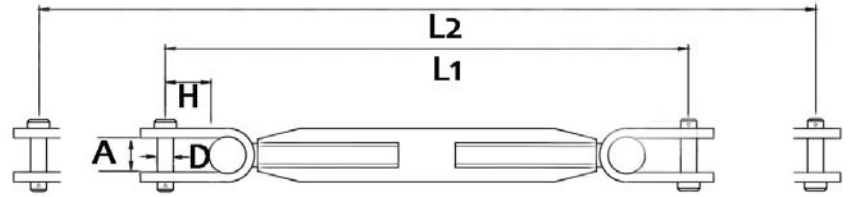
Art. No.	Size	A (mm)	D (mm)	H (mm)	L1 (mm)	L2 (mm)	WLL (kg)	Weight (kg/100pcs)
MR0108-0006	M6	7	6	15	160	230	200	10.8
MR0108-0008	M8	10	8	20	190	265	350	19.5
MR0108-0010	M10	12	9	25	230	320	700	32.5
MR0108-0012	M12	13	12	30	280	390	900	58
MR0108-0016	M16	17	16	40	370	510	1200	116
MR0108-0020	M20	20	19	45	430	570	2000	241



Rigging Screw Toggle&Terminal - T Toggle Style
High Polished Stainless Steel - AISI 316

Art. No.	Size	Wire (mm)	A (mm)	D (mm)	H (mm)	L1 (mm)	L2 (mm)
MR0161-0603	M6	3	7	6	15	180	250
MR0161-0804	M8	4	10	8	20	210	285
MR0161-1005	M10	5	12	9	25	250	340
MR0161-1206	M12	6	13	12	30	300	410
MR0161-1608	M16	8	17	16	40	390	530
MR0161-2010	M20	10	20	19	45	450	590





Rigging Screw Toggle&Toggle - T Toggle

Style

High Polished Stainless Steel - AISI 316

Art. No.	Size	A (mm)	D (mm)	H (mm)	L1 (mm)	L2 (mm)
MR0162-0006	M6	7	6	15	160	230
MR0162-0008	M8	10	8	20	190	265
MR0162-0010	M10	12	9	25	230	320
MR0162-0012	M12	13	12	30	280	390
MR0162-0016	M16	17	16	40	370	510
MR0162-0020	M20	20	19	45	430	570

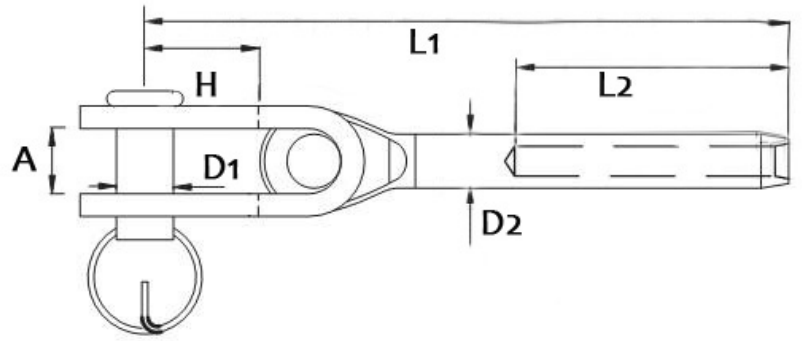


Rigging Screw Body

High Polished Stainless Steel - AISI 316

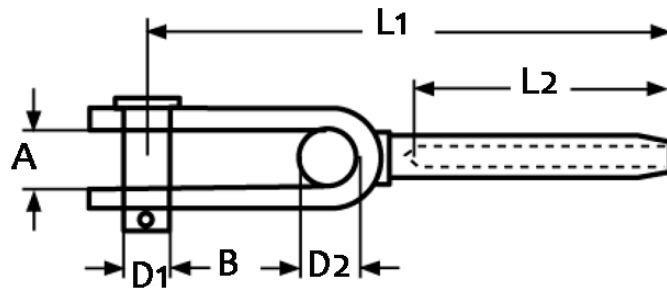
Art. No.	Size	Length (mm)
MR0110-0560	M5	60
MR0110-0580	M5	80
MR0110-0665	M6	65
MR0110-0690	M6	90
MR0110-0880	M8	80
MR0110-0810	M8	100
MR0110-1090	M10	90
MR0110-1012	M10	115
MR0110-1215	M12	150
MR0110-1416	M14	160
MR0110-1619	M16	190
MR0110-2022	M20	218





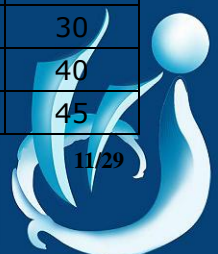
Toggle Terminal - Eye Toggle Style
High Polished Stainless Steel - AISI 316

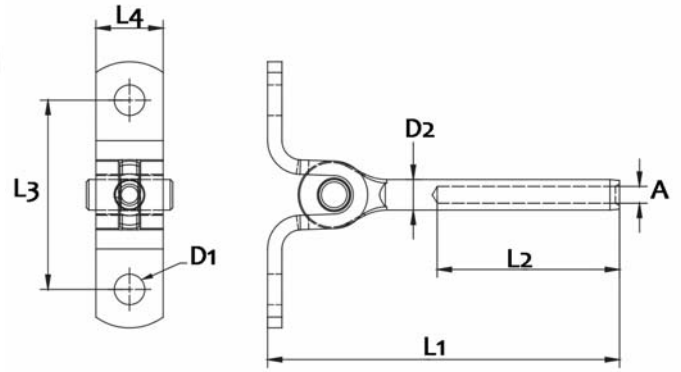
Art. No.	Wire (mm)	A (mm)	D1 (mm)	D2 (mm)	H (mm)	L1 (mm)	L2 (mm)
MR0111-0003	3	7	6	6.35	15	75	38
MR0111-0004	4	10	8	7.5	20	89	45
MR0111-0005	5	12	9	9	25	104	51
MR0111-0006	6	12.5	12	12.5	30	127	64
MR0111-0008	8	16	16	16	40	163	75
MR0111-0010	10	17.8	19	17.8	45	184	89



Toggle Terminal - T Toggle Style
High Polished Stainless Steel - AISI 316

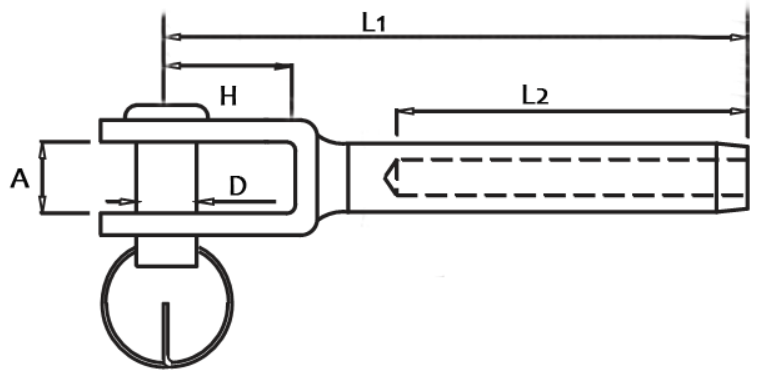
Art. No.	Wire (mm)	L1 (mm)	L2 (mm)	D1 (mm)	D2 (mm)	A (mm)	B (mm)
MR0148-0003	3	75	38	6	7	7	15
MR0148-0004	4	89	45	8	10	10	20
MR0148-0005	5	104	51	9	12	12	25
MR0148-0006	6	127	64	12	13	13	30
MR0148-0008	8	163	76	16	17	17	40
MR0148-0010	10	184	89	19	20	20	45





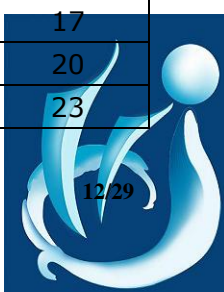
Wall Toggle Terminal
High Polished Stainless Steel - AISI 316

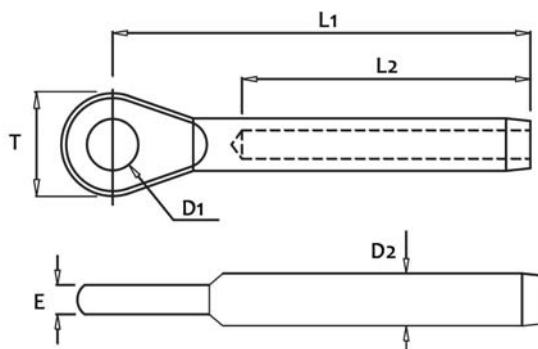
Art. No.	Wre (mm)	0 (mm)	L1 (mm)	L2 (mm)	L3 (mm)	L4 (mm)	D1 (mm)	D2 (mm)
MR0157-0003	3.0	3.5	74	38	40	14	6.4	6.4
MR0157-0004	4.0	4.4	87	45	44	18	8.3	7.5



Welded Fork Terminal
High Polished Stainless Steel - AISI 316

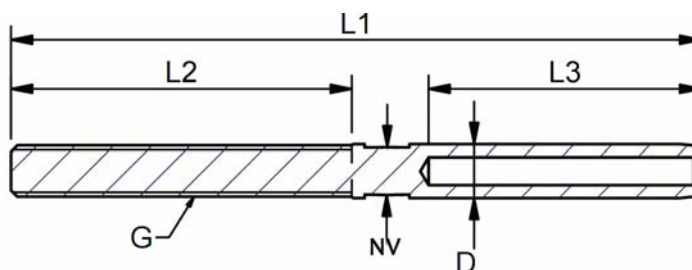
Art. No.	Wire (mm)	L1 (mm)	L2 (mm)	H (mm)	D (mm)	A (mm)
MR0112-0002	2	55	24	8	5	6
MR0112-0025	2.5	55	24	10	5	6.5
MR0112-0003	3	65	32	10	6	7.5
MR0112-0004	4	77	40	11	8	11
MR0112-0005	5	88	57	14	9	12
MR0112-0006	6	106	63	20	12	14
MR0112-0007	7	116	70	22	12	15
MR0112-0008	8	145	85	26	16	17
MR0112-0010	10	150	90	30	19	20
MR0112-0012	12	195	105	35	19	23





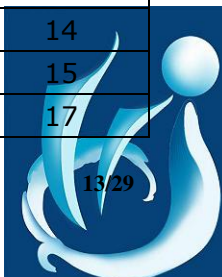
**Eye Terminal
High Polished Stainless Steel - AISI 316**

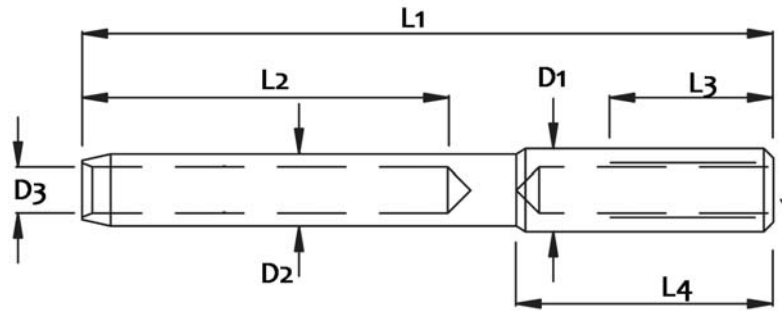
Art. No.	Wire (mm)	L1 (mm)	L2 (mm)	D1 (mm)	D1 (mm)	E (mm)	T (mm)
MR0113-0025	2.5	48.5	30	5.4	5.4	3	13
MR0113-0003	3	55	36	6.5	6.5	4	14
MR0113-0004	4	65	39	8.5	8.5	6	18
MR0113-0005	5	80	50	10	10	7	22
MR0113-0006	6	94	62	13	12.5	8	28
MR0113-0007	7	105	68	13	12.7	9	28
MR0113-0008	8	124	85	14.5	14.5	10	32
MR0113-0010	10	142	90	16.4	16.4	12	36
MR0113-0012	12	160	105	19.3	19.3	16	40



**Thread Terminal Right/Left Thread
High Polished Stainless Steel - AISI 316**

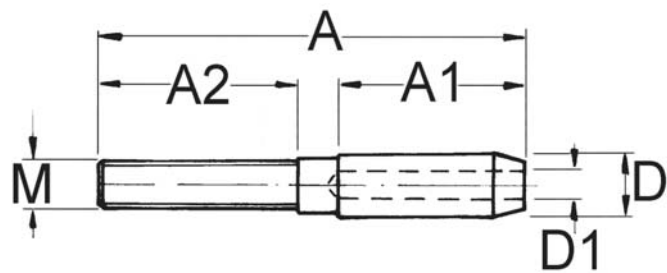
Art No.	Wire (mm)	G (mm)	L1 (mm)	L2 (mm)	L3 (mm)	D (mm)	NV (mm)
MR0114-0402	2	M4	73	38	24	4.8	3
MR0114-0502	2	M5	86	40	32	5.5	4
MR0114-0525	2.5	M5	86	40	32	5.5	4
MR0114-0603	3	M6	100	48	39	6.5	5
MR0114-0604	4	M6	110	48	45	7.5	5
MR0114-0804	4	M8	117	57	45	7.5	6
MR0114-1005	5	M10	130	63	52	9	7
MR0114-1206	6	M12	162	80	64	12.5	10
MR0114-1407	7	M14	180	90	70	14.2	12
MR0114-1608	8	M16	200	100	80	16	14
MR0114-2010	10	M20	230	119	90	18	15
MR0114-2012	12	M20	245	120	105	20	17





**Inside Thread Terminal Right/Left Thread
High Polished Stainless Steel - AISI 316**

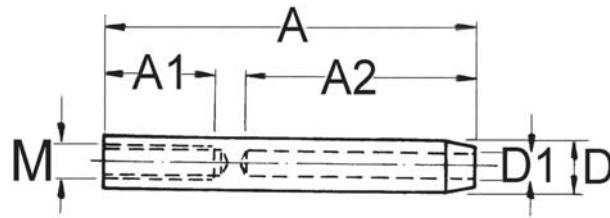
Art. No.	G	Wire (mm)	L1 (mm)	L2 (mm)	L3 (mm)	L4 (mm)	D1 (mm)	D2 (mm)	A (mm)
MR0115-0425	M4	2.5	64	32	15	25	5.5	5.5	2.8
MR0115-0503	M5	3	77	38	20	30	7.13	6.35	3.5
MR0115-0604	M6	4	84	45	20	30	8	7.5	4.4
MR0115-0605	M6	5	90	51	20	30	9	9	5.3
MR0115-0805	M8	5	112	51	40	53	12.58	9	5.3
MR0115-0806	M8	6	110	64	25	35	12.58	12.58	6.5
MR0115-1006	M10	6	127	64	40	53	16	12.58	6.5
MR0115-1008	M10	8	140	83	40	50	16	16	8.4
MR0115-1208	M12	8	147	83	40	53	18	16	8.4
MR0115-1210	M12	10	150	89	40	50	17.8	17.8	10.5
MR0115-1610	M16	10	152	89	40	53	22	17.8	10.5



**Threaded Terminal Right/Left Thread
High Polished Stainless Steel - AISI 316**

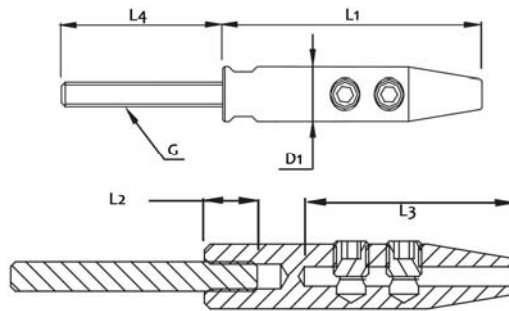
Art. No.	M	Wire (mm)	A (mm)	A1 (mm)	A2 (mm)	D1 (mm)	D2 (mm)
MR0137-0503	M5	3	50	18	27	3.3	6.3
MR0137-0604	M6	4	60	25	30	4.3	7.5
MR0137-0805	M8	5	70	31	31	5.3	9
MR0137-1006	M10	6	85	37	40	6.3	12.5





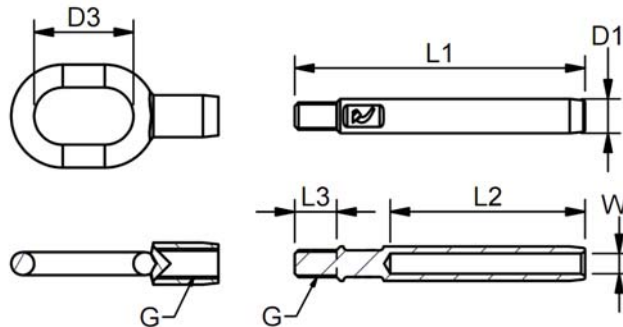
**Inside Threaded Terminal Right/Left Thread
High Polished Stainless Steel - AISI 316**

Art. No.	Wire	M	D	D1	A	A1	A2
			(mm)	(mm)	(mm)	(mm)	(mm)
MR0149-0503	3	M5	6.3	3.3	55	20	28
MR0149-0604	4	M6	7.5	4.3	65	22	36
MR0149-0605	5	M6	9	5.3	70	22	41
MR0149-0806	6	M8	12.5	6.3	85	25	53



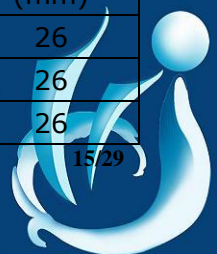
**Terminal
High Polished Stainless Steel - AISI 316**

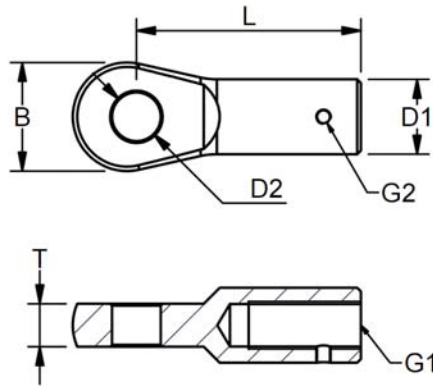
Art. No.	Wire	G	D1	L1	L2	L3	L4
	(mm)		(mm)	(mm)	(mm)	(mm)	(mm)
MR0152-0503	3	M5	11	53	8	36	34
MR0152-0604	4	M6	13	58	9	38	37
MR0152-0605	5	M6	14	65	9	45	37
MR0152-0806	6	M8	16	73	12	47	45



**Rope Terminal
High Polished Stainless Steel - AISI 316**

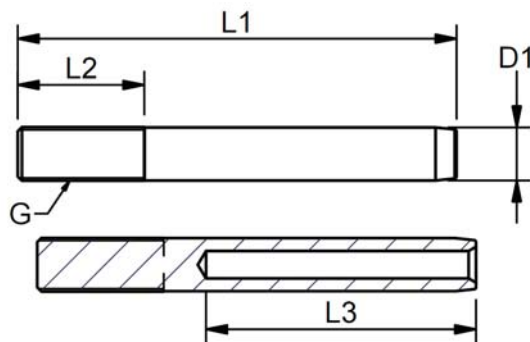
Art. No.	Wire	G	L1	L2	L3	D1	D3
	(mm)		(mm)	(mm)	(mm)	(mm)	(mm)
MR0153-0803	3	M8	60	38	10	6.35	26
MR0153-0804	4	M8	68	45	11	7.5	26
MR0153-0805	5	M8	76	51	11	9	26





Removable Eye High Polished Stainless Steel - AISI 316

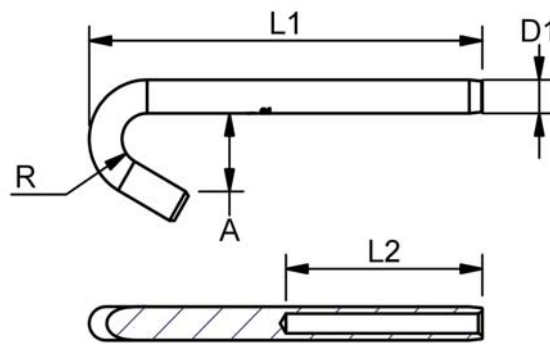
Art. No.	G1	G2	L	T	B	D1	D2
			(mm)	(mm)	(mm)	(mm)	(mm)
MR0154-0008	M8	M4	39.5	6.5	21.7	14	8.5
MR0154-0010	M10	M4	41	9	21	15	9.8
MR0154-0012	M12	M4	58	10	24	18	11.2
MR0154-0013	M12	M4	60	11.5	29	20	13
MR0154-0016	M16	M6	88	14	35	28	16.5
MR0154-0020	M20	M6	99	18	40	30	19.5



Short Thread Terminal High Polished Stainless Steel - AISI 316

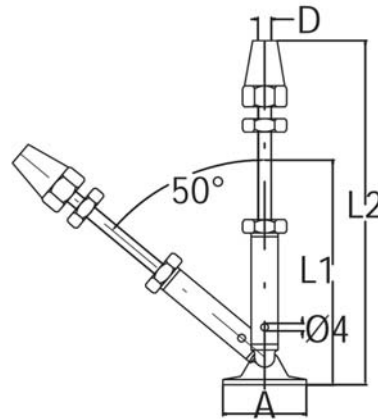
Art. No.	Wre	G	D1	L1	L2	L3
	(mm)		(mm)	(mm)	(mm)	(mm)
MR0155-0804	4.00	M8	7.5	73.00	12.00	45.00
MR0155-0805	5.00	M8	9.0	82.00	12.00	51.00
MR0155-1005	5.00	M10	9.0	82.00	20.00	51.00
MR0155-0806	6.00	M8	12.6	96.00	12.00	64.00
MR0155-1206	6.00	M12	12.6	104.00	30.00	64.00
MR0155-1207	7.00	M12	14.2	115.00	30.00	70.00
MR0155-1208	8.00	M12	16.0	123.00	30.00	83.00
MR0155-1610	10.00	M16	17.8	155.00	40.00	89.00
MR0155-2012	12.00	M20	20.0	185.00	50.00	120.00





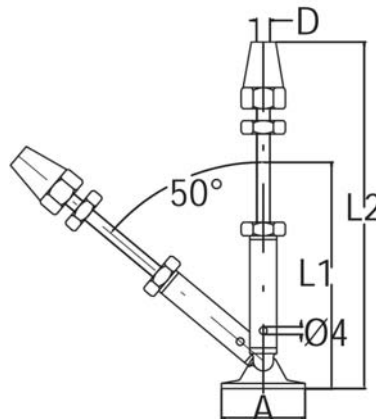
Hook Terminal
High Polished Stainless Steel - AISI 316

Art. No.	Wre (mm)	D1 (mm)	L1 (mm)	L2 (mm)	A (mm)	R (mm)
MR0156-0025	2.5	6.35	68.5	32	12	8
MR0156-0003	3	6.35	73	38	12	8
MR0156-0004	4	7.5	90	45	18	11.5



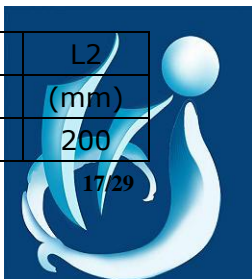
Universal Rail Turnbuckle With Quick Attach Terminal Flat
High Polished Stainless Steel - AISI 316

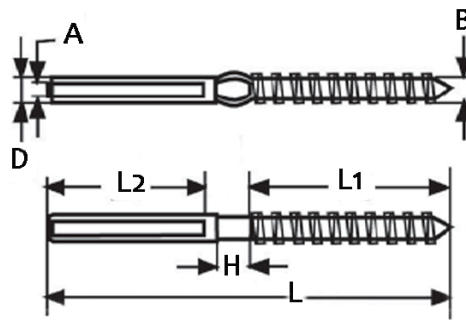
Art. No.	Wire (mm)	D (mm)	A (mm)	B (mm)	L1 (mm)	L2 (mm)
MR0150-0104	4	4	38	4	143	200



Universal Rail Turnbuckle With Quick Attach Terminal Round
High Polished Stainless Steel - AISI 316

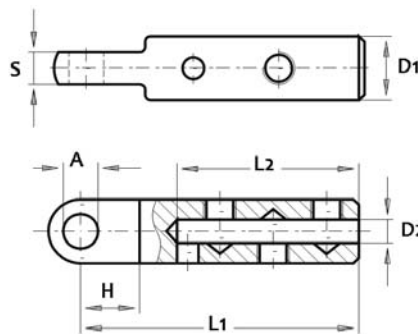
Art. No.	Wire (mm)	For Tube (mm)	D (mm)	A (mm)	B (mm)	L1 (mm)	L2 (mm)
MR0150-5004	4	50.8	4	38	4	143	200





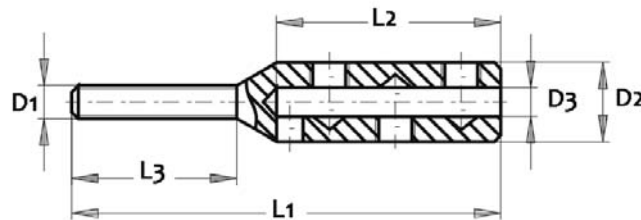
**Lag Screw Swage Terminal Left/Right Hand Thread
High Polished Stainless Steel - AISI 316**

Art. No.	Wire(A) (mm)	B (mm)	D (mm)	H (mm)	L (mm)	L1 (mm)	L2 (mm)
MR0151-0603	3	6	6.3	8	97	48	38
MR0151-0804	4	8	7.5	10	115	54	45
MR0151-1005	5	10	9	10	128	61	52
MR0151-1206	6	12	12.5	10	162	79	63



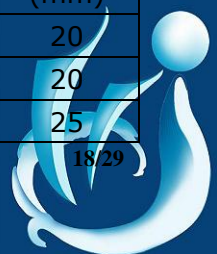
**Screw Terminal With Eye
High Polished Stainless Steel - AISI 316**

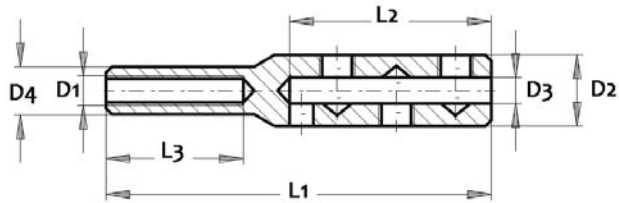
Art. No.	Wire (mm)	A (mm)	S (mm)	H (mm)	D1 (mm)	D2 (mm)	L1 (mm)	L2 (mm)
MR0140-0002	2	4.5	4	9	8	2.4	37	25
MR0140-0003	3	5.5	5	11	10	3.5	43	32
MR0140-0004	4	6.5	6	11	12	4.5	52	34



**Threaded Screw Terminal Left/Right Hand Thread
High Polished Stainless Steel - AISI 316**

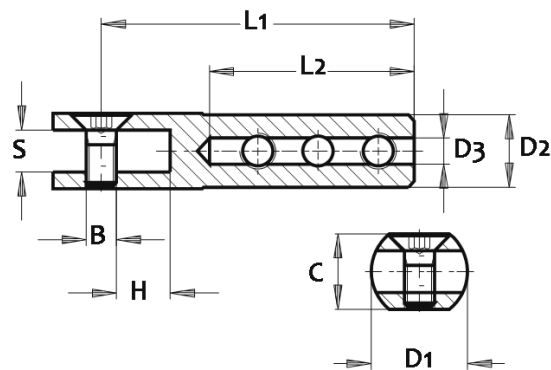
Art. No.	Wire (mm)	D1 (mm)	D2 (mm)	D3 (mm)	L1 (mm)	L2 (mm)	L3 (mm)
MR0138-0402	2	M4	8	2.4	50	25	20
MR0138-0403	3	M4	10	3.5	56	32	20
MR0138-0504	4	M5	12	4.5	65	34	25





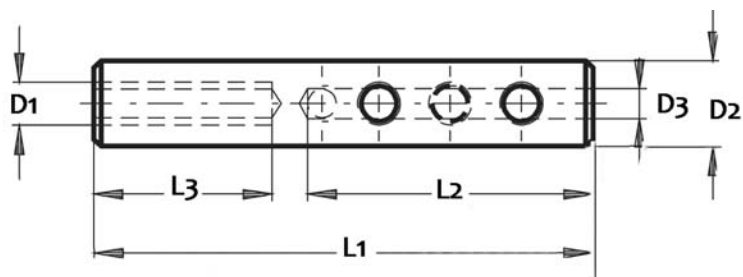
**Inside Threaded Screw Terminal Left/Right Hand Thread
High Polished Stainless Steel - AISI 316**

Art. No.	Wire (mm)	D1 (mm)	D2 (mm)	D3 (mm)	D4 (mm)	L1 (mm)	L2 (mm)	L3 (mm)
MR0139-0402	2	M4	8	2.4	6	50	25	20
MR0139-0403	3	M4	10	3.5	6	56	32	20
MR0139-0504	4	M5	12	4.5	8	65	34	25



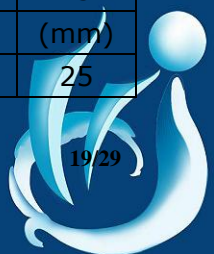
**Screw Terminal With Jaw
High Polished Stainless Steel - AISI 316**

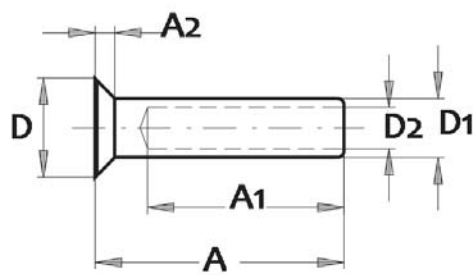
Art. No.	Wire (mm)	C (mm)	D1 (mm)	D2 (mm)	D3 (mm)	L1 (mm)	L2 (mm)	S (mm)	H (mm)	B (mm)
MR0141-0002	2	10	12	8	2.4	37	25	4.5	7	M4
MR0141-0003	3	10.5	13	10	3.5	43	32	5.5	9	M4
MR0141-0004	4	12.5	16	12	4.5	52	34	6.5	9	M5



**Screw Terminal Left/Right Hand Thread
High Polished Stainless Steel - AISI 316**

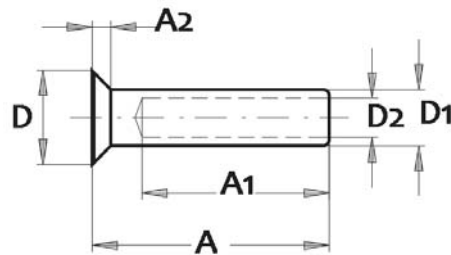
Art. No.	Wire (mm)	D1 (mm)	D2 (mm)	D3 (mm)	L1 (mm)	L2 (mm)	L3 (mm)
MR0142-0304	3+4	M6	12	4.5	70	40	25





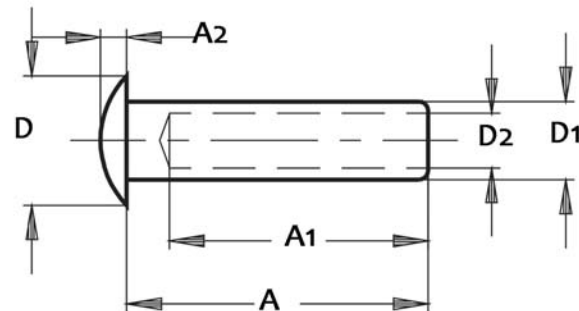
Cone Terminal
High Polished Stainless Steel - AISI 316

Art. No.	Wire (mm)	A (mm)	A1 (mm)	A2 (mm)	D (mm)	D1 (mm)	D2 (mm)
MR0143-0003	3	34	27	2	8	6.3	3.3
MR0143-0004	4	43	35	2	9.5	7.5	4.3
MR0143-0005	5	50	40	3	13	9	5.3
MR0143-0006	6	64	50	3	16.5	12.5	6.3



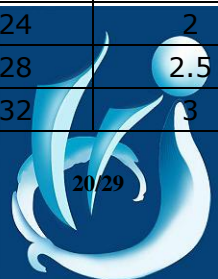
Cone Terminal Mini Type
High Polished Stainless Steel - AISI 316

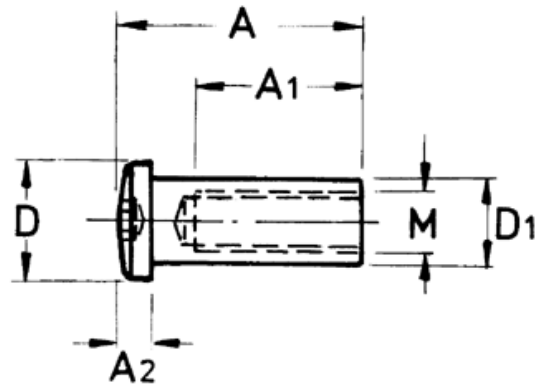
Art. No.	Wire (mm)	D (mm)	D1 (mm)	D2 (mm)	A (mm)	A1 (mm)	A2 (mm)
MR0144-0002	2	7.6	4.5	2.2	21	15	1.7
MR0144-0003	3	8.7	5.4	3.3	27	20	2
MR0144-0004	4	10.9	6.5	4.3	29	22	2.5
MR0144-0005	5	12.5	7.5	5.3	32.5	25	3
MR0144-0006	6	15	9.5	6.3	38	30	4



Dome Head Terminal
High Polished Stainless Steel - AISI 316

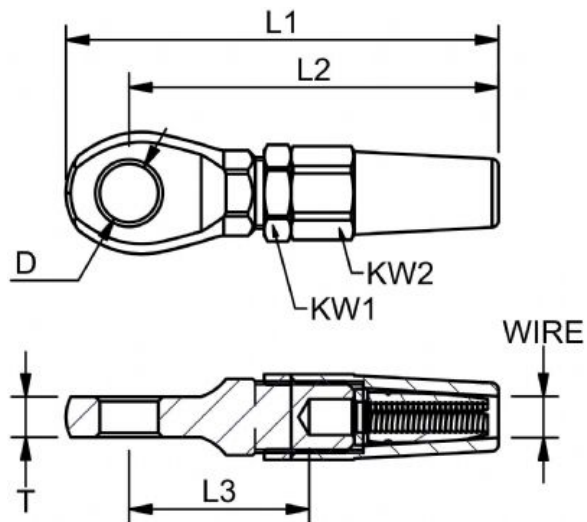
Art. No.	Wire (mm)	D (mm)	D1 (mm)	D2 (mm)	A (mm)	A1 (mm)	A2 (mm)
MR0145-0002	2	7.6	4.5	2.2	19	15	1.6
MR0145-0003	3	8.7	5.4	3.3	25	20	1.7
MR0145-0004	4	11.1	6.5	4.3	30	24	2
MR0145-0005	5	13	7.5	5.3	35	28	2.5
MR0145-0006	6	16	9	6.3	40	32	3





**Dome Head Internal Thread Right/Left Thread
High Polished Stainless Steel - AISI 316**

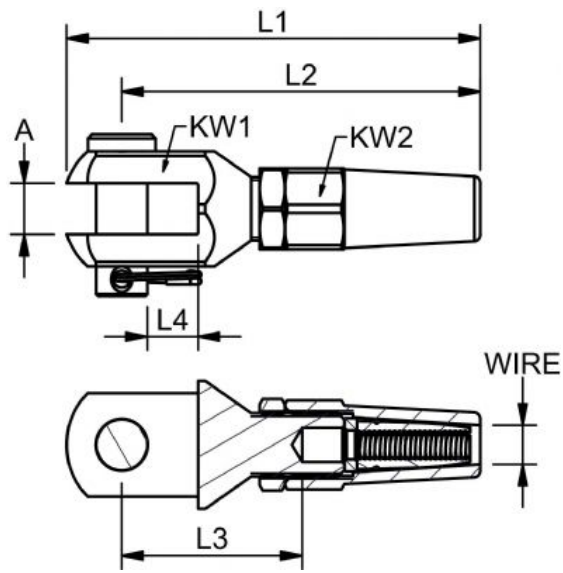
Art. No.	Size(M)	D	D1	A	A1	A2
	(mm)	(mm)	(mm)	(mm)	(mm)	(mm)
MR0146-0005	M5	12	7.5	25	18	4
MR0146-0006	M6	12	8	30	24	4
MR0146-0008	M8	16	12	35	28	5
MR0146-0010	M10	20	14	40	32	6



**Swageless Eye Terminal
High Polished Stainless Steel - AISI 316**

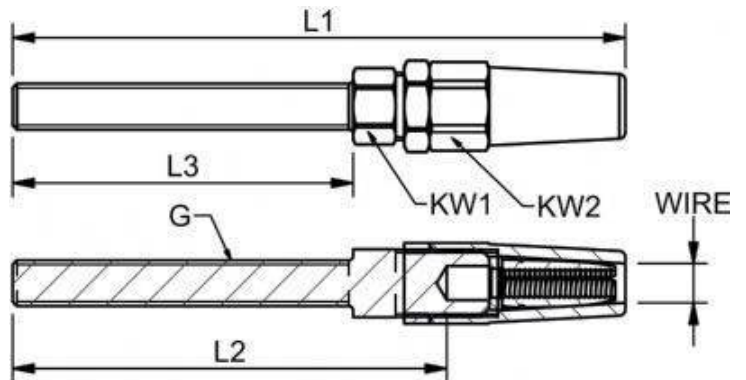
Art. No.	Wire	T	L1	L2	L3	D	KW1	KW2
	(mm)	(mm)	(mm)	(mm)	(mm)	(mm)	(mm)	(mm)
MR0122-0003	3	5.5	58	50	26.5	6.3	10	12
MR0122-0004	4	7	68	58	31	8.3	13	14
MR0122-0005	5	8	81	70	37	10.3	14	16
MR0122-0006	6	9	105	89	50.5	13	18	21
MR0122-0008	8	10	121	103	52.5	14.5	19	24
MR0122-0010	10	13	135	116	65	16.2	24	27





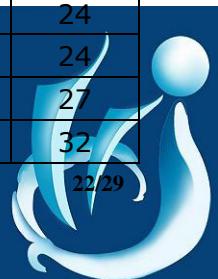
**Swageless Fork Terminal
High Polished Stainless Steel - AISI 316**

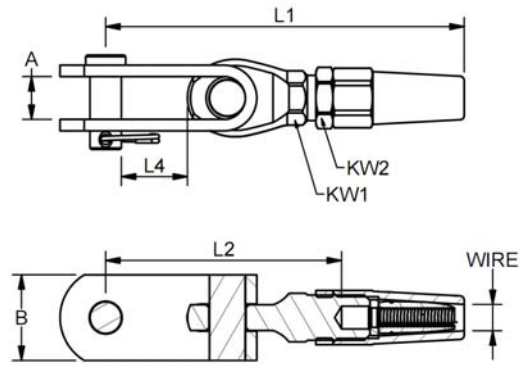
Art. No.	Wire (mm)	A (mm)	L1 (mm)	L2 (mm)	L3 (mm)	L4 (mm)	Pin Dia (mm)	KW1 (mm)	KW2 (mm)
MR0123-0003	3	6	63	55	29	8	6	14	12
MR0123-0004	4	8	73	62	35	8	8	19	14
MR0123-0005	5	10	83	72	42	10	10	22	16
MR0123-0006	6	12	95	82	47.5	12	12	27	19
MR0123-0008	8	14	118	103	58	14	14	30	24
MR0123-0010	10	16	135	117	70	16	16	36	27



**Swageless Thread Terminal Right / Left Thread
High Polished Stainless Steel - AISI 316**

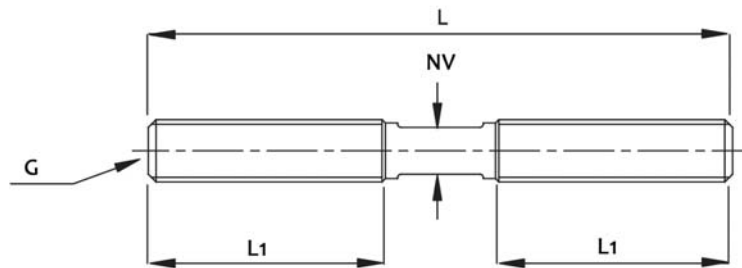
Art. No.	Wire (mm)	G Thread	L1 (mm)	L2 (mm)	L3 (mm)	KW1 (mm)	KW2 (mm)
MR0124-0503	3	M5	79	58	42	10	12
MR0124-0603	3	M6	85	63	47	10	12
MR0124-0604	4	M6	92	63	47	12	14
MR0124-0804	4	M8	102	72	57	12	14
MR0124-0805	5	M8	111	78	57	13	16
MR0124-1005	5	M10	117	84	63	13	16
MR0124-1006	6	M10	128	90	63	16	19
MR0124-1206	6	M12	145	107	80	16	19
MR0124-1208	8	M12	162	113	80	19	24
MR0124-1408	8	M14	171	122	89	19	24
MR0124-1608	8	M16	182	133	100	24	27
MR0124-1610	10	M16	190	139	100	27	32





**Swageless Toggle Terminal
High Polished Stainless Steel - AISI 316**

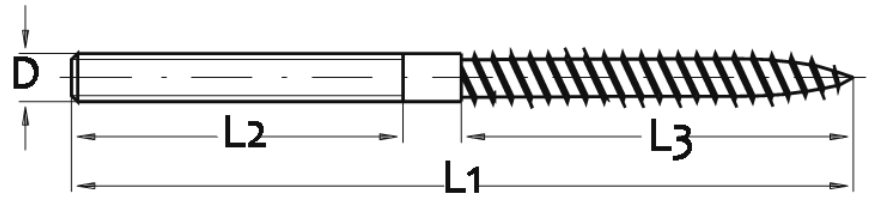
Art. No.	Wire (mm)	L1 (mm)	L2 (mm)	L4 (mm)	KW1 (mm)	KW2 (mm)	A (mm)	B (mm)	Pin Dia (mm)
MR0125-0003	3	71	50	12	10	12	8	14	6
MR0125-0004	4	90	61	15	13	14	10	18	8
MR0125-0005	5	108	75	21	14	16	12	23	9.5
MR0125-0006	6	125	88	23	17	19	15	30	11
MR0125-0008	8	148	102	23.7	19	24	18	30	12.7
MR0125-0010	10	176	125	32	24	27	20	35	16



**Double Thread Pin
Stainless Steel - AISI 316**

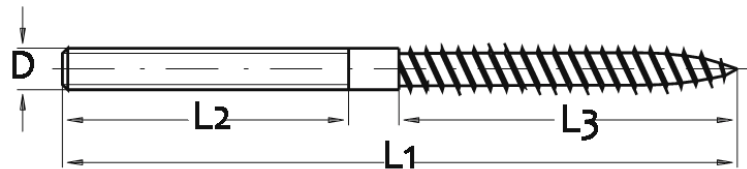
Art. No.	Size(G)	L (mm)	L1 (mm)	NV (mm)
MR0126-0005	M5	70	30	3
MR0126-0006	M6	106	48	4.5
MR0126-0008	M8	129	57	6
MR0126-0010	M10	145	63	7
MR0126-0012	M12	180	80	9
MR0126-0014	M14	198	89	11
MR0126-0555	M5	55	25	4
MR0126-0665	M6	65	30	5
MR0126-0875	M8	75	35	7
MR0126-1085	M10	85	40	9





**Dual Thread Screw
Stainless Steel - AISI 316**

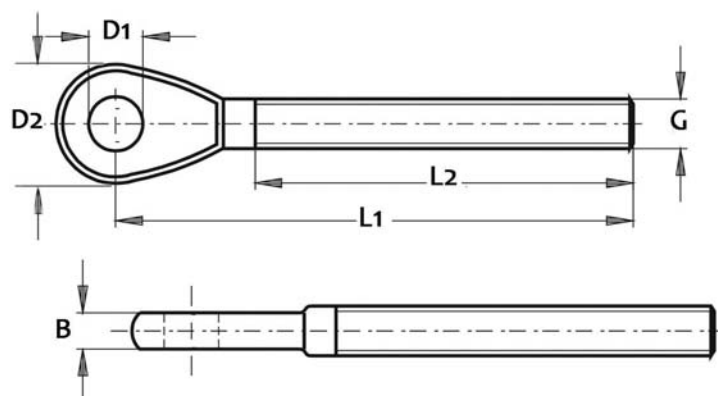
Art. No.	Size(G)	A (mm)	L1 (mm)	L2 (mm)	L3 (mm)
MR0127-0570	M5	5	70	30	24
MR0127-0680	M6	6	80	35	40
MR0127-0610	M6	6	100	35	60
MR0127-0860	M8	8	90	40	40
MR0127-1010	M10	10	100	45	45



**Dual Thread Screw
Stainless Steel - AISI 316**

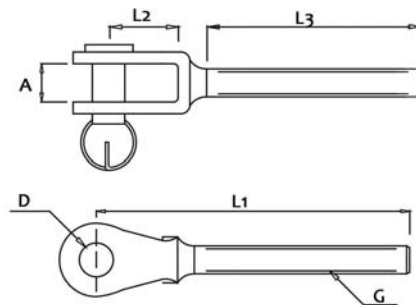
Art. No.	Size(D)	L1 (mm)	L2 (mm)	L3 (mm)
MR0127-0470	M4	70	28	40
MR0127-0580	M5	80	32	43
MR0127-0690	M6	90	35	50
MR0127-0813	M8	130	55	65
MR0127-1015	M10	150	55	75





**Thread Eye Right/Left Thread
High Polished Stainless Steel - AISI 316**

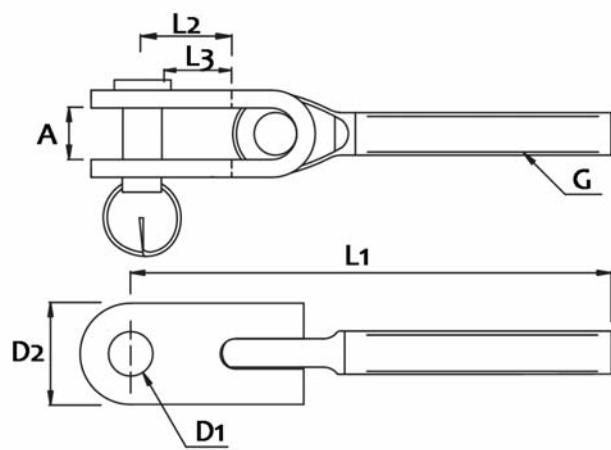
Art. No.	Size(G)	D1 (mm)	D2 (mm)	L1 (mm)	L2 (mm)	B (mm)
MR0128-0004	M4	4.3	10	50	35	3
MR0128-0005	M5	5.5	12	63	41	3
MR0128-0006	M6	6.5	14	65	47	4
MR0128-0008	M8	8.5	17	78	57	5
MR0128-0010	M10	10.5	22	90	63	6
MR0128-0012	M12	13	25	110	80	8
MR0128-0014	M14	13	28	124	90	9
MR0128-0016	M16	14.5	31	133	100	10
MR0128-0020	M20	19.5	40	164	120	15



**Thread Fork Welded Right/Left Thread
High Polished Stainless Steel - AISI 316**

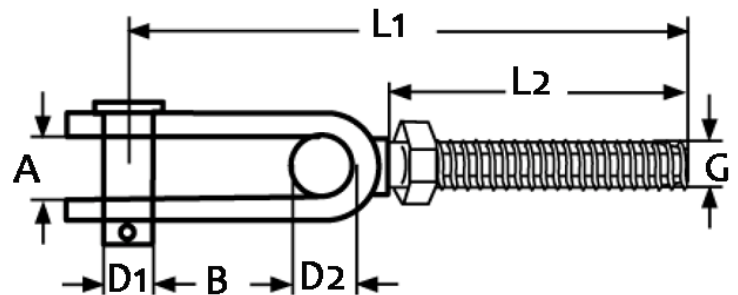
Art. No.	G	A (mm)	D (mm)	L1 (mm)	L2 (mm)	L3 (mm)
MR0129-0004	M4	6.5	4	50	9.5	34
MR0129-0005	M5	7.5	5	60	12	41
MR0129-0706	M6	7.5	5	67	12	47
MR0129-1006	M6	9.5	6	68	13	47
MR0129-1008	M8	9.5	6	79	13	57
MR0129-1108	M8	11	8	82	15	57
MR0129-1110	M10	11	8	90	15	63
MR0129-1210	M10	12	9.5	94	19	63
MR0129-1412	M12	14	12	119	25	80
MR0129-1812	M12	18	14	129	33	80
MR0129-1414	M14	14	12	137	25	90
MR0129-1816	M16	18	14	151	33	100
MR0129-2420	M20	24	19	191	50.5	120





**Thread Toggle Right/Left Thread - Eye Toggle Style
High Polished Stainless Steel - AISI 316**

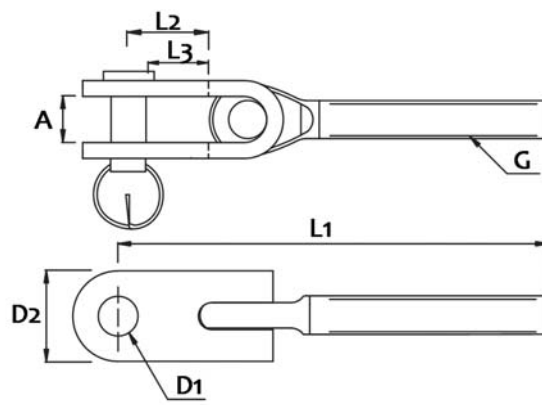
Art. No.	G	A	D1	D2	L1	L2	L3
		(mm)	(mm)	(mm)	(mm)	(mm)	(mm)
MR0130-0006	M6	8	6	14	88	16	13
MR0130-0008	M8	10	8	18	105	21	16
MR0130-0010	M10	12	9.5	22	128	26.3	21.5
MR0130-0012	M12	18	12.7	30	154	33.4	27
MR0130-0014	M14	18	12.7	30	172	34.6	28.3
MR0130-0016	M16	20	16	35	199	37	29
MR0130-0020	M20	24	19	40	230	39.5	30



**Thread Toggle Right/Left Thread - T Toggle Style
High Polished Stainless Steel - AISI 316**

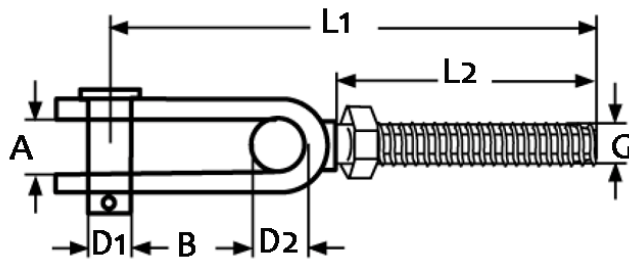
Art. No.	Size(G)	L2	L1	D1	D2	A	B
		(mm)	(mm)	(mm)	(mm)	(mm)	(mm)
MR0147-0005	M5	42	62	5	6	6	13
MR0147-0006	M6	48	77	6	7	7	15
MR0147-0008	M8	56	94	8	10	10	20
MR0147-0010	M10	67	116	9	12	12	25
MR0147-0012	M12	81	136	12	13	13	30
MR0147-0014	M14	89	140	14	15	15	35
MR0147-0016	M16	103	163	16	17	17	40
MR0147-0020	M20	115	198	19	19	20	45





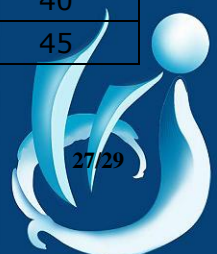
**Thread Toggle Right/Left Thread - Eye Toggle Style
High Polished Stainless Steel - AISI 316**

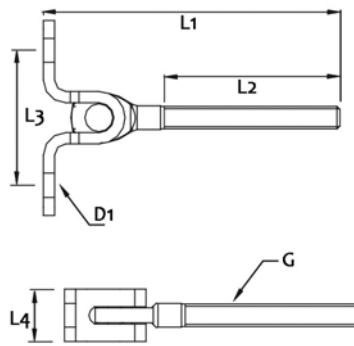
Art. No.	G	A	D1	D2	L1	L2	L3
		(mm)	(mm)	(mm)	(mm)	(mm)	(mm)
MR0130-0006	M6	8	6	14	88	16	13
MR0130-0008	M8	10	8	18	105	21	16
MR0130-0010	M10	12	9.5	22	128	26.3	21.5
MR0130-0012	M12	18	12.7	30	154	33.4	27
MR0130-0014	M14	18	12.7	30	172	34.6	28.3
MR0130-0016	M16	20	16	35	199	37	29
MR0130-0020	M20	24	19	40	230	39.5	30



**Thread Toggle Right/Left Thread - T Toggle Style
High Polished Stainless Steel - AISI 316**

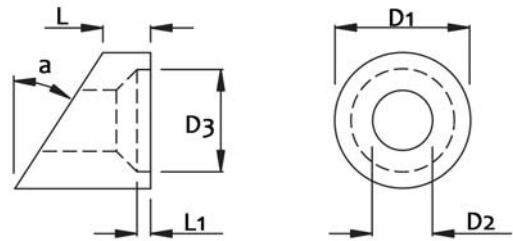
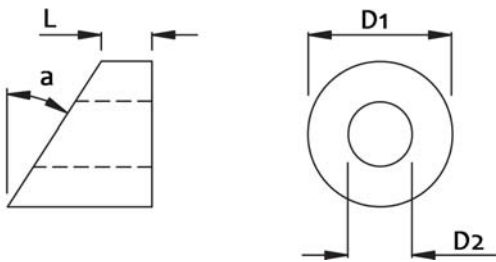
Art. No.	Size(G)	L2	L1	D1	D2	A	B
		(mm)	(mm)	(mm)	(mm)	(mm)	(mm)
MR0147-0005	M5	42	62	5	6	6	13
MR0147-0006	M6	48	77	6	7	7	15
MR0147-0008	M8	56	94	8	10	10	20
MR0147-0010	M10	67	116	9	12	12	25
MR0147-0012	M12	81	136	12	13	13	30
MR0147-0014	M14	89	140	14	15	15	35
MR0147-0016	M16	103	163	16	17	17	40
MR0147-0020	M20	115	198	19	19	20	45





**Thread Wall Toggle Right/Left Thread
High Polished Stainless Steel - AISI 316**

Art. No.	G	L1	L2	L3	L4	D1
		(mm)	(mm)	(mm)	(mm)	(mm)
MR0131-0006	M6	81	47	40	14	6,4
MR0131-0008	M8	97	57	44	18	8,3

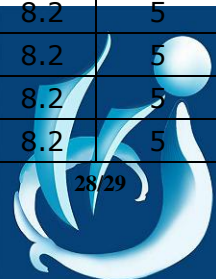


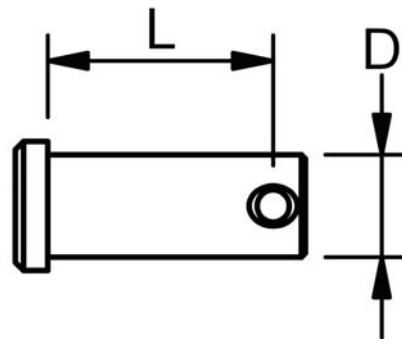
**Angle Hinge
High Polished Stainless Steel - AISI 316**

Art. No.	α	D1	D2	L
	(Degree)	(mm)	(mm)	(mm)
MR0135-2005	20	11	5	5
MR0135-2505	25	11	5	5
MR0135-3005	30	11	5	5
MR0135-3505	35	11	5	5
MR0135-4005	40	11	5	5
MR0135-2006	20	13	6	5
MR0135-2506	25	13	6	5
MR0135-3006	30	13	6	5
MR0135-3506	35	13	6	5
MR0135-4006	40	13	6	5
MR0135-2008	20	17	8.2	5
MR0135-2508	25	17	8.2	5
MR0135-3008	30	17	8.2	5
MR0135-3508	35	17	8.2	5
MR0135-4008	40	17	8.2	5

**Angle Hinge For Cone Terminal
High Polished Stainless Steel - AISI 316**

Art. No.	α	D1	D2	L
	(Degree)	(mm)	(mm)	(mm)
MR0136-2005	20	11	5	5
MR0136-2505	25	11	5	5
MR0136-3005	30	11	5	5
MR0136-3505	35	11	5	5
MR0136-4005	40	11	5	5
MR0136-2006	20	13	6	5
MR0136-2506	25	13	6	5
MR0136-3006	30	13	6	5
MR0136-3506	35	13	6	5
MR0136-4006	40	13	6	5
MR0136-2008	20	17	8.2	5
MR0136-2508	25	17	8.2	5
MR0136-3008	30	17	8.2	5
MR0136-3508	35	17	8.2	5
MR0136-4008	40	17	8.2	5



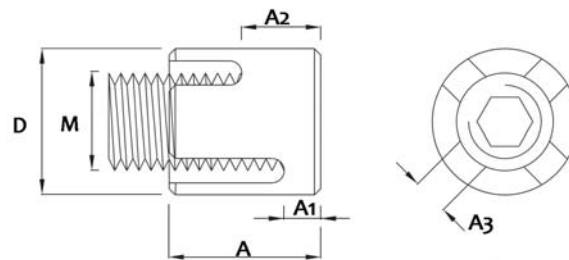


Clevis Pin
High Polished Stainless Steel - AISI 316

Art. No.	L	D	Art. No.	L	D
	(mm)	(mm)		(mm)	(mm)
MR0134-1304	13	4	MR0134-3416	34	16
MR0134-1505	15	5	MR0134-4016	40	16
MR0134-1706	17	6	MR0134-4419	44	19
MR0134-1606	16	6.35	MR0134-4919	49	19
MR0134-1808	18	8	MR0134-4622	46	22
MR0134-2108	21	8	MR0134-5522	55	22
MR0134-2310	23	9.5	MR0134-5822	58	22
MR0134-2611	26	11	MR0134-5525	55	25.4
MR0134-2812	28	12	MR0134-6325	63	25.4
MR0134-3012	30	12	MR0134-7328	73	28
MR0134-3412	34	12	MR0134-8332	83	32
MR0134-3214	32	14	MR0134-8935	88.5	35
MR0134-3714	37	14			



+



Net Clip With Half Thread Or Through Thread
High Polished Stainless Steel - AISI 316

Art. No.	Wire	M	A	A1	A2	A3	D
	(mm)	(mm)	(mm)	(mm)	(mm)	(mm)	(mm)
MR0133-0003	3	M12	19	5	8	3.2	17
MR0133-0004	4	M12	21	5	8	4.2	20
MR0133-0005	5	M12	23	5	10	5.2	20
MR0133-0006	6	M12	25	5	10	6.2	20
MR0133-0006	8	M16	36	6	14	8.3	24

